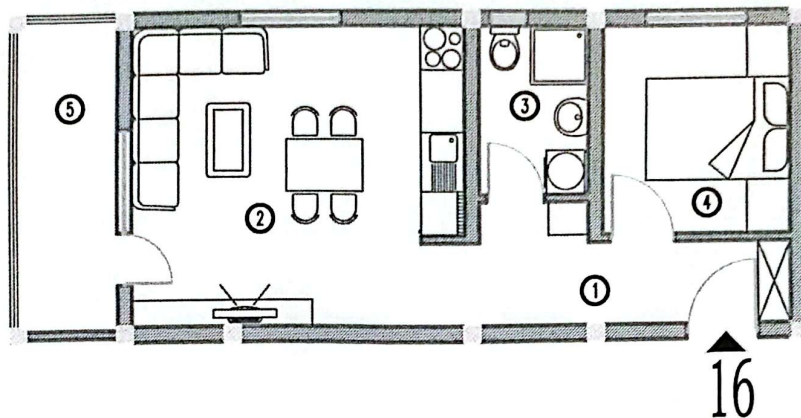
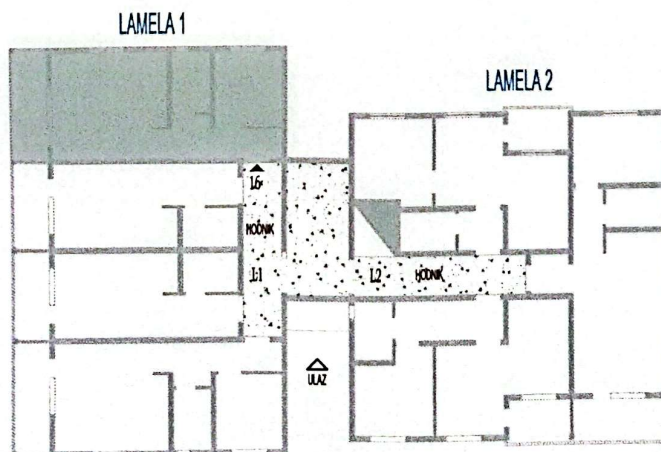


DVA KOLEKTIVNO STAMBENA OBJEKTA - LAMELA 1 I LAMELA 2  
 k.p. br. 4103/7 KO VRNJAČKA BANJA  
 LAMELA 1  
 STAN BR 16  
 II SPRAT  
 VLASNIK \_\_\_\_\_



L1 - STAN BR.16					
r.b.	prostorija	neto površina [m <sup>2</sup> ] "a"	koeficijent "k"	korisna površina "a' x k"	obrada poda
1	hodnik	5,56	0,97	5,39	keramika
2	d.soba+kuh.+trp.	18,79	0,97	18,23	ker./parket
3	kupatilo	3,45	0,97	3,35	keramika
4	soba	7,41	0,97	7,19	parket
5	terasa	6,45	0,97	6,26	keramika
	<b>svega:</b>	<b>41,66</b>		<b>40,41</b>	



OSNOVA II SPRATA