

DVA KOLEKTIVNO STAMBENA OBJEKTA - LAMELA 1 I LAMELA 2

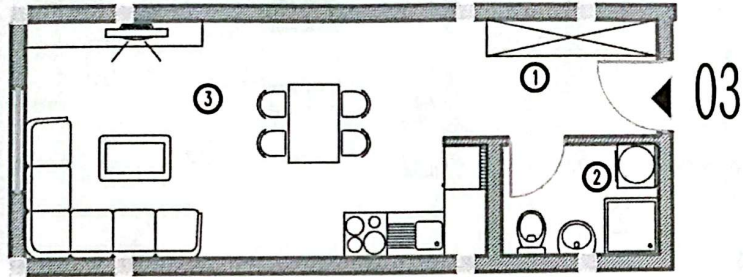
k.p. br. 4103/7 KO VRNJAČKA BANJA

LAMELA 1

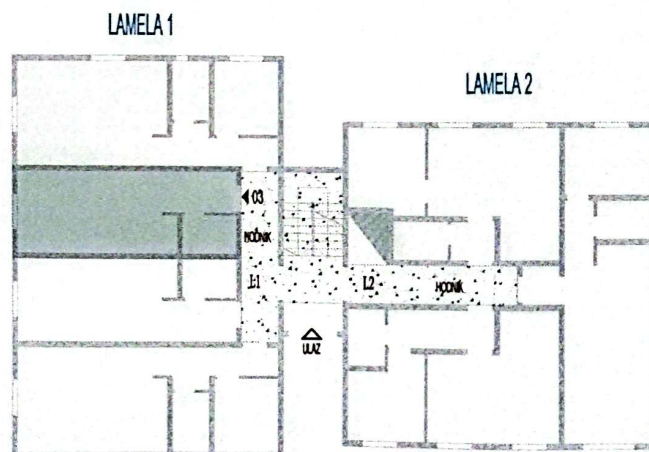
STAN BR 3

SUTEREN

VLASNIK _____



L1 - STAN BR. 3					
r.b.	prostorija	neto površina [m ²]	koeficijent	korisna površina	obrada poda
		"a"	"k"	"a' x k"	
1	hodnik	3,84	0,97	3,72	keramika
2	kupatilo	3,30	0,97	3,20	keramika
3	dn.soba+kuh.+trp.	20,74	0,97	20,12	ker./parket
	svega:	27,88		27,04	



OSNOVA SUTERENA