

DVA KOLEKTIVNO STAMBENA OBJEKTA - LAMELA 1 I LAMELA 2

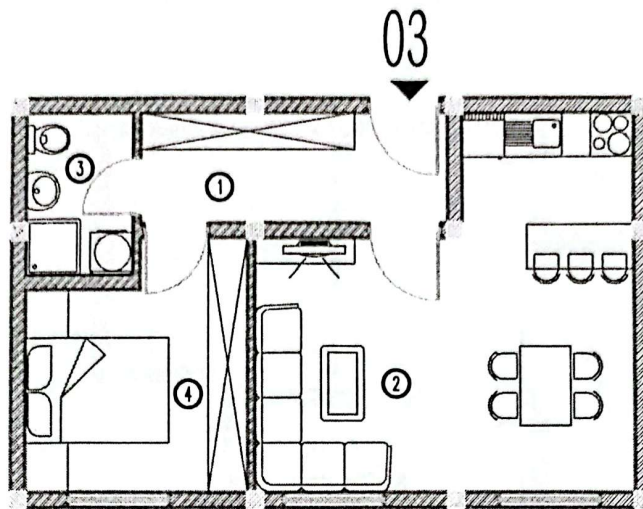
k.p. br. 4103/7 KO VRNJAČKA BANJA

LAMELA 2

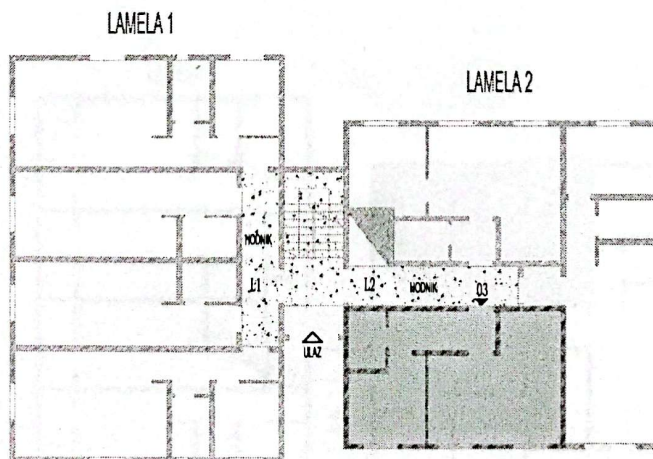
STAN BR 3

SUTEREN

VLASNIK _____



L2 - STAN BR. 3					
r.b.	prostorija	neto površina [m2]	koeficijent	korisna površina	obrada poda
		"a"	"k"	"a' x k"	
1	hodnik	6,45	0,97	6,26	keramika
2	dn.soba+kuh.+trp.	22,09	0,97	21,43	ker./parket
3	kupatilo	3,30	0,97	3,20	keramika
4	soba	9,42	0,97	9,14	parket
	svega:	41,26		40,02	



OSNOVA SUTERENA